



US Army Corps of Engineers, Alaska District
Alaska Department of Transportation and Public Facilities
Ports and Harbors Conference
November 18, 2010

Transportation Program

SAFETEA-LU Authorized:

Roads \$60,000,000

Waterfront Development \$40,000,000

Legislation to replace SAFETEA-LU likely in 2013



Project Development Strategy

Joint Funding for most projects

- EDA-USACE-DOT&PF-DCCED
- City-Borough-Tribal governments
- Regional Tribal Non-Profit Organizations

Design and Construction Management

- Roads: WFLHD-DOT&PF-City/Boro/Tribal
- WFD: USACE-State-Borough-City

Road Priorities

Local Roads and Streets
ATV Roads
ATV Board Roads
Village Connector Roads



Waterfront Development Priorities

Regional Ports
Harbor Reconstruction
Boat Launch Ramps
Village Barge Landings



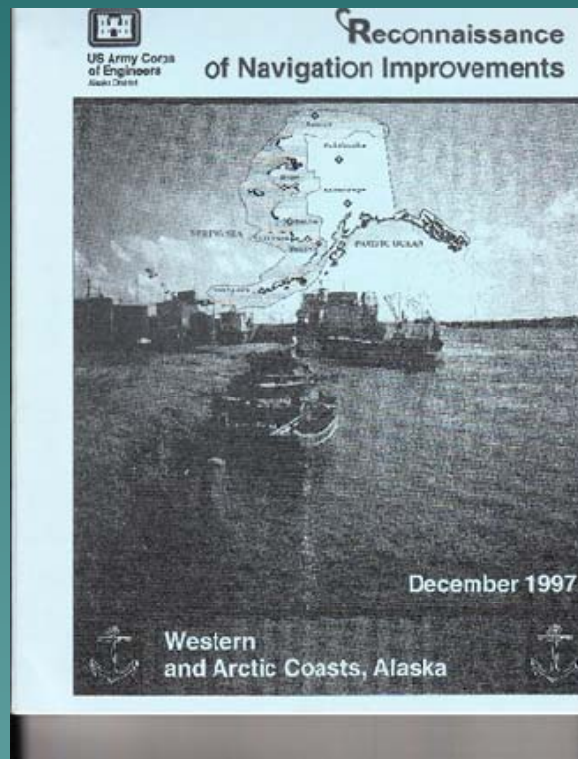
Previous Studies Identified Need for Barge Landing Improvements

Yukon-Kuskokwim Delta Transportation Plan Summary

*An Element of the
Alaska Statewide Transportation Plan*



Alaska Department of Transportation
and Public Facilities
March 2002



Northwest Alaska Transportation Plan Community Transportation Analysis

*An Element of the
Alaska Statewide Transportation Plan*



Alaska Department of Transportation
and Public Facilities

February 11, 2004



Barge Landing Study

Study Team

USACE Engineering-Planning-Project Mgt.
Kim Nielsen & team at URS

Task Phases

- | | |
|--------|------------------------------------|
| Ph I | Arctic and Western Alaska |
| Ph II | Aleutians-Gulf of Alaska-Southeast |
| Ph III | 5-Year Construction Plan |

Barge Landing Study

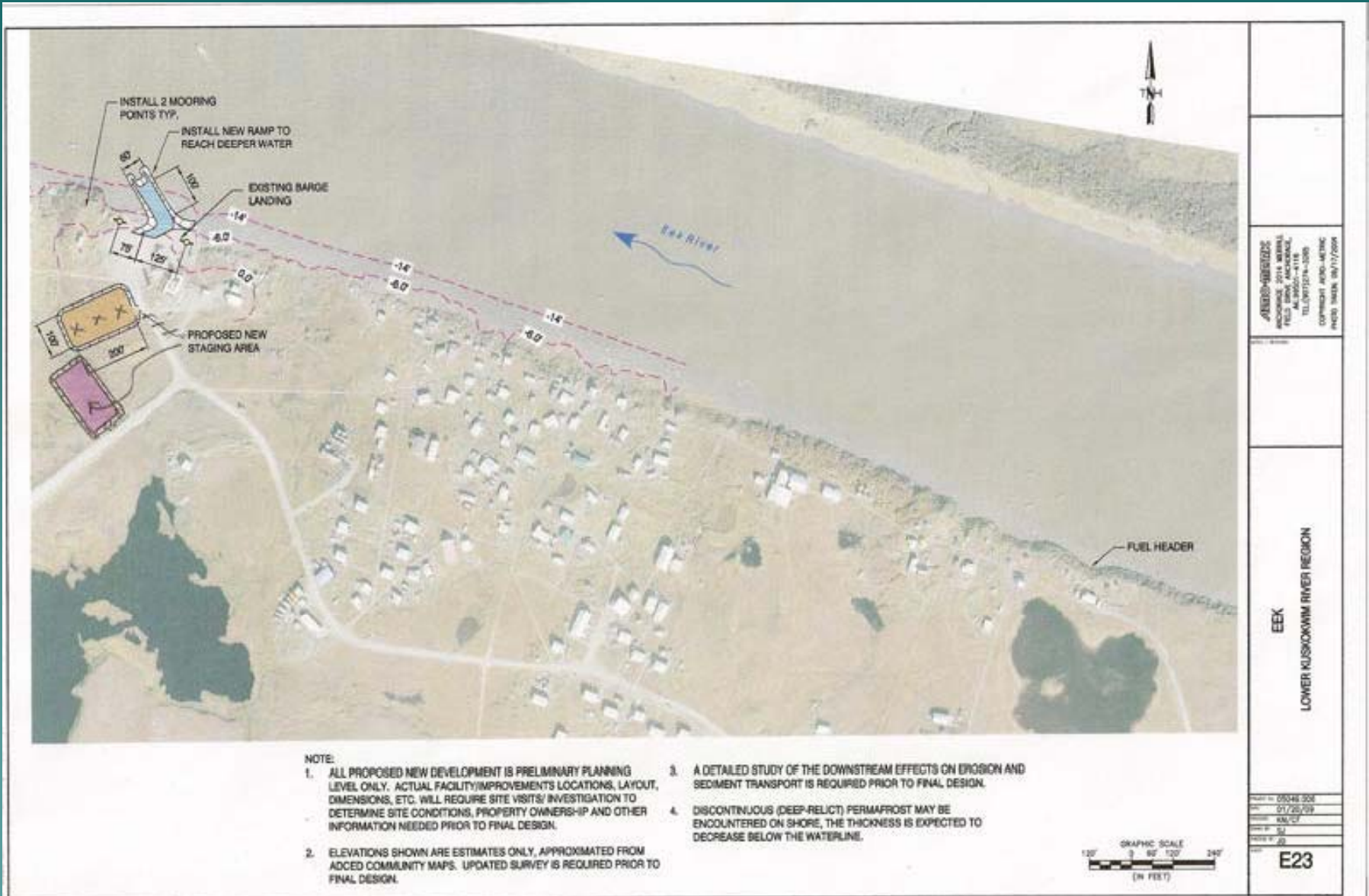
Study Method

Interview Barge Ops-Contractors-Communities
Build Community Barge Landing Maps
Develop Scoring Criteria & Rank Communities

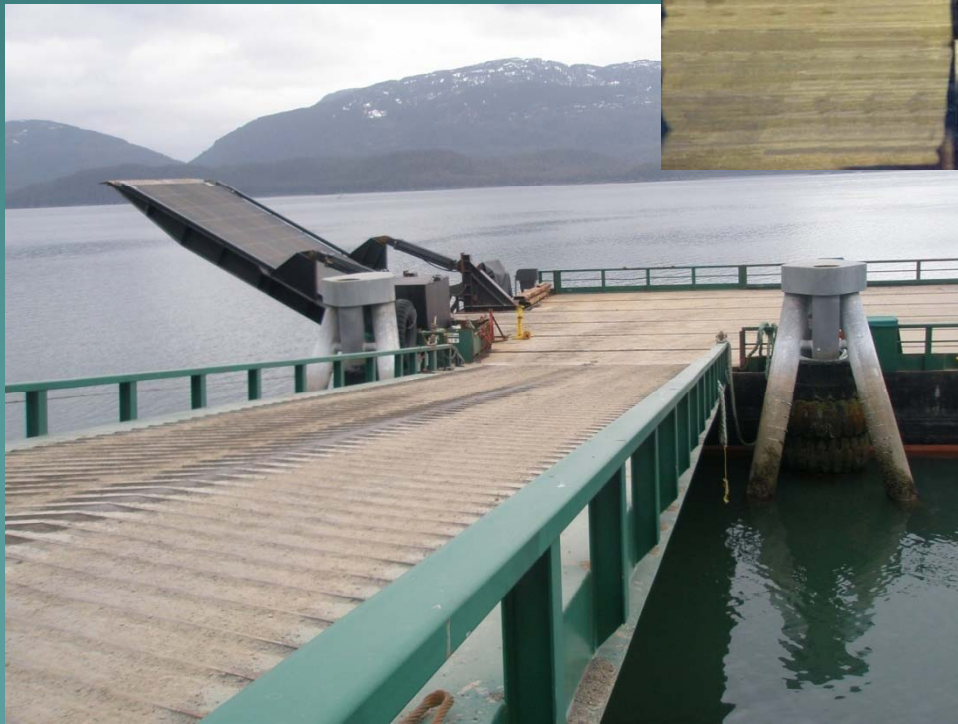
Study Results

Phase I ~33 Priority Projects
Phase II ~13 Priority Projects

Barge Landing Mapping











2005.04.28

Barge Mooring Points

Improve Safety

Improve Operational Efficiency

- Based on USACE design
 - 30-foot pile with chain or bit
- 2-3 Mooring points installed at each landing site
- 1-3 Landing sites per community
- Test Installation at Chevak





2010-2012 Construction Plan

Completed 3 villages lower Kuskokwim R.

In Bid Process 7 villages lower Yukon R.

Design 7 villages along Kuskokwim R.

Proposed 2011 16 villages upper Yukon R.

Structure Recon 6 complete – 6 to complete

Expected Completion Date 2014

Thank You For Excellence

Ken Eisses

Dee Ginter

Merlin Peterson

Greg Carpenter

Marcus Palmer

Coleman Chalup

Robert Tedrick

Bruce Sexaur

Lorraine Cordova

Patrick Fitzgerald

George Kalli

Claire Jaeger

Bob Brock

Melanie Peterson

Kim Nielsen URS